

LED Track & Pendant light

- Market Lighting

Visit us at:
 Hong Kong Lighting Fair 2017 Booth No.: 1C-D40, Date: Oct.27-30
 Lighting & Building, Frankfurt, 2018 Hall 10.1-A20, Date: March.18-23



PrevaLED
Cube AC



Fortimo DLM-Flex



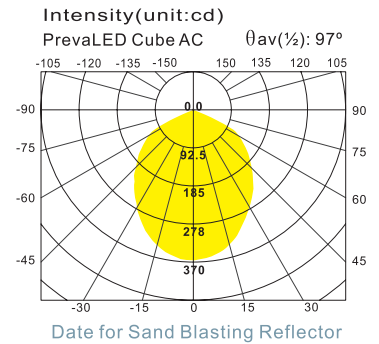
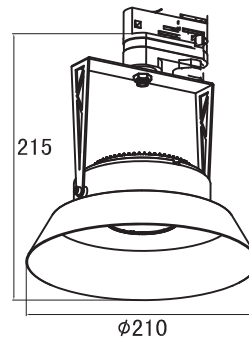
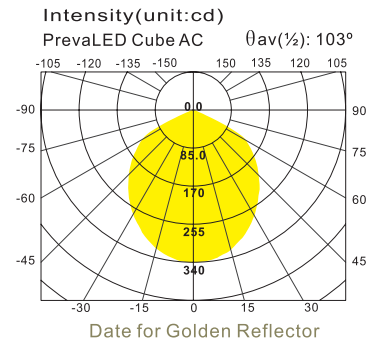
Sabina

TLD8410

- Trim : Alum. Die Cast
- Housing : Alum. Die Cast
- Heat Sink : Alum. Extrusion
- Track Adaptor : 1 / 3 Phases
- LED Power : PrevaLED Cube AC 1100lm
- Versions : Fortimo DLM 1100lm



TLD8410-GR



Green

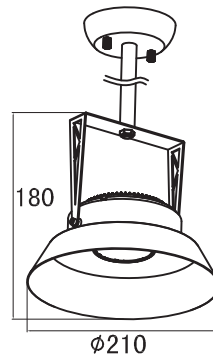


Red

Colour Selection



Hakan



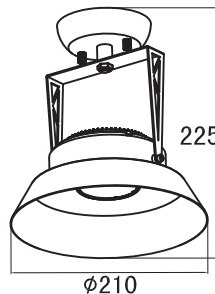
210



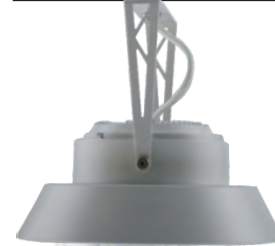
Pawel

PLD8410

- Trim : Alum. Die Cast
- Housing : Alum. Die Cast
- Heat Sink : Alum. Extrusion
- Diffuser : Without Glass
- LED Power : PrevaLED Cube AC 1100lm
- Versions : Fortimo DLM 1100lm



210



PLD8410

- Trim : Alum. Die Cast
- Housing : Alum. Die Cast
- Heat Sink : Alum. Extrusion
- Diffuser : Without Glass
- LED Power : PrevaLED Cube AC 1100lm
- Versions : Fortimo DLM 1100lm



Widgerm Lighting Ltd.

Hong Kong Office: Flat A, 3/F., Tak Wing Ind. Building, 3 Tsun Wen Rd., Tuen Mun, N.T., Hong Kong
 China Factory: Fulusha Village, Shatian Town, Dongguan City, Guangdong Province, China

匯湛照明有限公司

Facebook: www.facebook.com/Widgerm
 Web: <http://www.widgerm.com.hk>
 E-mail: info@widgerm.com.hk
 Tel: (+852) 2465 5679 Fax: (+852) 2455 8434