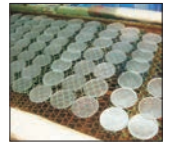


# Glass and Optical lens for lighting

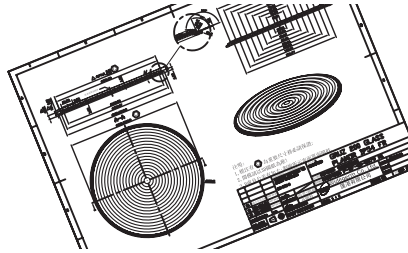
## Molded Glass & Sheet Cut Glass



### Molded Glass

To offer buyer a one-stop solution, We provide professional support and competitive price for lighting manufacturers to source optical lens and glass diffusers from our partners. A wide range of molded glass, from custom design, that can achieve with generally accepted tolerance requirement and specifications. We sometimes apply the lens to our lighting products and reflectors for better service and costing reducing to buyers. Below listed are the common treatments, finishes and materials we currently provide.

- Textures of molded glass
- Etching and Sand Blasting treatments
- Cut hole and Drilling
- Bending and Edge polishing
- Toughening for safety glass
- Borosilicate material for heat
- Dichronic Coating process for Coloured light



Elongation Lens



Curved Lens



Spread Lens



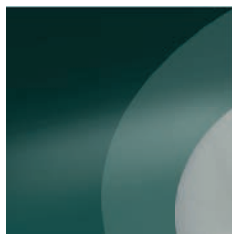
Molding Process

### Sheet Cut Glass

#### Glass Diffuser Finishes :



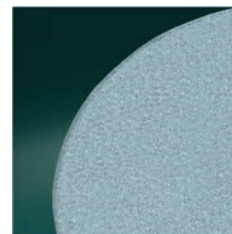
Frosted



Semi Frosted



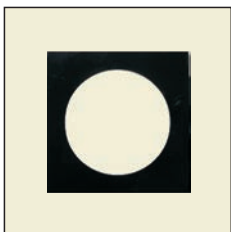
Prismatic Texture



Ameba Texture



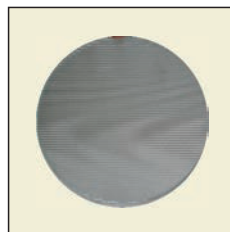
Colour Printed



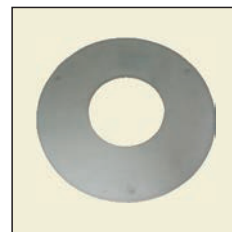
Partly Black Printed



Prismatic Square Cut



Stripe Round Cut



Central Hole Cut with Frosted Finish



Central Hole Cut with Partly Sand Blasting

**Remark : Several edge treatments and thickness upon request. Customer Design is welcome.**