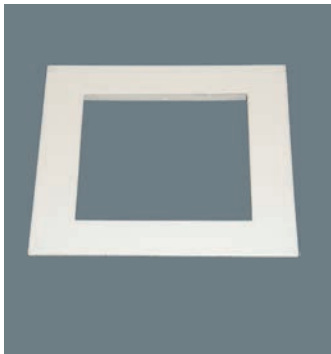


Component

Square Trim, Gear Box & Spring

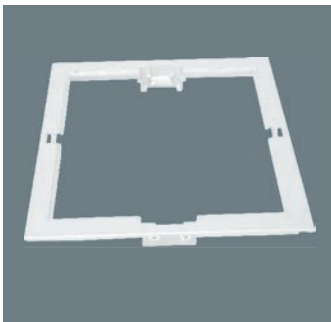


Square Trim



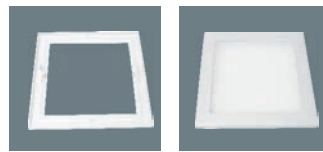
Die cast square single trim

Model no.	Description	Material	Dimension	Cut out	Reflector Dimension
DTS0301	die cast single trim	Die cast	86x86	75x75	62x62
DTS0401	die cast single trim	Die cast	133x133	110x110	96x96
DTS0501	die cast single trim	Die cast	140x140	123x123	107x107
DTS0701	die cast single trim	Die cast	170x170	150x150	132x132
DTS0801	die cast single trim	Die cast	200x200	180x180	161x161
DTS0901	die cast single trim	Die cast	245x245	220x220	192x192

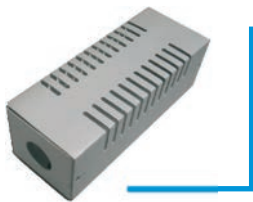


Die cast square double trim for glass

Model no.	Description	Material	Dimension	Cut out	Reflector Dimension
DDT5066	Die cast double trim	Die cast	178x178	155x155	137x137
DDT7099	Die cast double trim	Die cast	225x225	207x207	184x184
DDT1108	Die cast double trim	Die cast	270x270	255x255	226x226



Metal Gear Box



RTB49

Material: Aluminium
Size: 135x53x44mm
For 50VA E-transformer / 13W conventional ballast



RTB52

Material: Aluminium
Size: 165x103x44mm
For electronic compact ballast or 2x26W conventional ballast



TW88

Material: Steel
Size: (OD) 90mm
(H) 38mm
For wiring



TRB230

Material: Aluminium
Size: (OD) 230mm
(H) 46 mm
For two ballasts

Spring and Mounting Clips



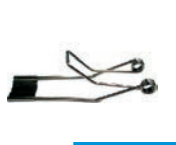
0802019(389-S)

Size: (L) 60mm
(W) 30mm



0802018(389-L)

Size: (L) 69mm
(W) 32mm



8264 (H-S)

Size: (L) 45mm
(W) 18mm



0802001 (U)

Size: (L) 80mm
(W) 46mm



WS126

Size: (L) 92mm
(W) 20mm



0802053 (T)

Size: (L) 45mm
(W) 25mm



0302014 (383)

Size: (L) 60mm
(W) 16mm



032013 (381)

Size: (L) 42mm
(W) 16mm



CH200 (J)

Size: (L) 66mm
(W) 30mm



0306302 (V)

Size: (L) 50mm
(W) 18mm



CH201 (J)

Size: (L) 48mm
(W) 18mm



OD138

Size: (OD) 115mm