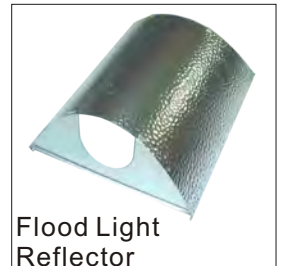




Reflector with Louver

The combination of louver is one the attractive chapter in Tailux Reflector. All models consist of the louvers and a top part in which is designed for receiving compact fluorescent lamps of different types and wattages. The typical for this louver is the open, parabolic inner cone which is connected with the outer cone via the blades that are also parabolic. The customer can choose between several designs that differ in the number and the height of the blades used.

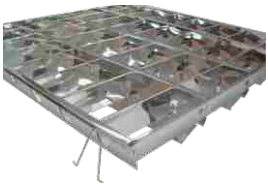
The parabolic open inner cone typical of the Tailux turbo louver is replaced by closed centre piece in case of the models of the Tailux Ring Louvre and Tailux Segment Louvre lines. As in the case of the models of the Turbo Louvre series the parabolic blades are fixed between the centre piece and the outer cone. In contrast to the Tailux Segment Louvre which is available with suitable numeral blades, the Tailux Ring Louvre is fitted with an additional reduction ring.



Folding Louver

Folding reflector excel by a high quality manufacture and best photometric characteristics. Special attention has been paid to the compliance with defining the luminance limit angles for work places.

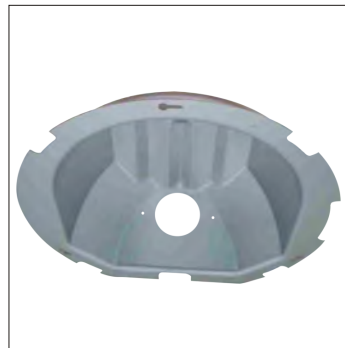
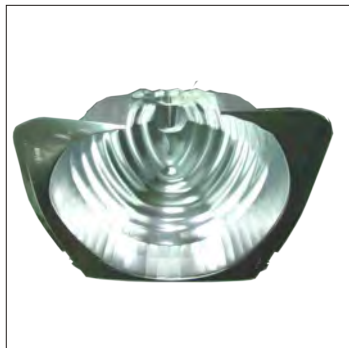
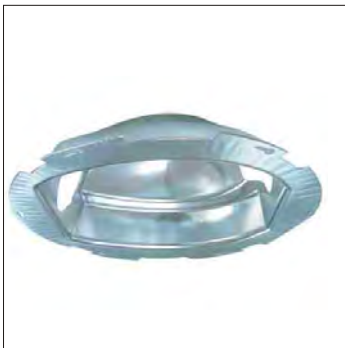
Parabolic-shaped blades and side parts as well as the use the high specular or semi-matt colour-free super pure aluminium do not only guarantee high light output ratios but also a perfect and multidirectional reflector of light.



"#" Shaped Baide



Pressing Reflector and Metal Parts



Deep Drawing Machine

